

**CK7 Antibody**  
**Purified Mouse Monoclonal Antibody**  
**Catalog # AO1366a****Specification**

---

**CK7 Antibody - Product Information**

|                   |                        |
|-------------------|------------------------|
| Application       | WB, FC, E              |
| Primary Accession | <a href="#">P08729</a> |
| Reactivity        | Human                  |
| Host              | Mouse                  |
| Clonality         | Monoclonal             |
| Isotype           | IgG1                   |
| Calculated MW     | 51kDa KDa              |

**Description**

CK7 (Keratin, type II cytoskeletal 7) is a protein that in humans is encoded by the KRT7 gene. CK7 is a member of the keratin family. It is specifically expressed in the simple epithelia lining the cavities of the internal organs and in the gland ducts and blood vessels. The protein encoded by this gene is a member of the keratin gene family. The type II cytokeratins consist of basic or neutral proteins which are arranged in pairs of heterotypic keratin chains coexpressed during differentiation of simple and stratified epithelial tissues. This type II cytokeratin is specifically expressed in the simple epithelia lining the cavities of the internal organs and in the gland ducts and blood vessels. The genes encoding the type II cytokeratins are clustered in a region of chromosome 12q12-q13. Alternative splicing may result in several transcript variants; however, not all variants have been fully described.

**Immunogen**

Purified recombinant fragment of human CK7 expressed in E. Coli.

**Formulation**

Ascitic fluid containing 0.03% sodium azide.

**CK7 Antibody - Additional Information**

**Gene ID** 3855

**Other Names**

Keratin, type II cytoskeletal 7, Cytokeratin-7, CK-7, Keratin-7, K7, Sarcolectin, Type-II keratin Kb7, KRT7, SCL

**Dilution**

WB~~1/500 - 1/2000

FC~~1/200 - 1/400

E~~N/A

**Storage**

Maintain refrigerated at 2-8°C for up to 6 months. For long term storage store at -20°C in small aliquots to prevent freeze-thaw cycles.

**Precautions**

CK7 Antibody is for research use only and not for use in diagnostic or therapeutic procedures.

## CK7 Antibody - Protein Information

**Name** KRT7

**Synonyms** SCL

### Function

Blocks interferon-dependent interphase and stimulates DNA synthesis in cells. Involved in the translational regulation of the human papillomavirus type 16 E7 mRNA (HPV16 E7).

### Cellular Location

Cytoplasm.

### Tissue Location

Expressed in cultured epidermal, bronchial and mesothelial cells but absent in colon, ectocervix and liver. Observed throughout the glandular cells in the junction between stomach and esophagus but is absent in the esophagus.

## CK7 Antibody - Protocols

Provided below are standard protocols that you may find useful for product applications.

- [Western Blot](#)
- [Blocking Peptides](#)
- [Dot Blot](#)
- [Immunohistochemistry](#)
- [Immunofluorescence](#)
- [Immunoprecipitation](#)
- [Flow Cytometry](#)
- [Cell Culture](#)

## CK7 Antibody - Images

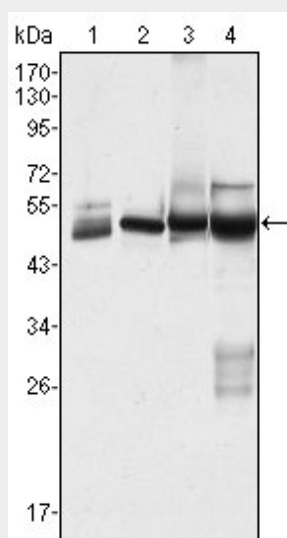


Figure 1: Western blot analysis using CK7 mouse mAb against Hela (1), MCF-7 (2), A431 (3) and A549 (4) cell lysate.

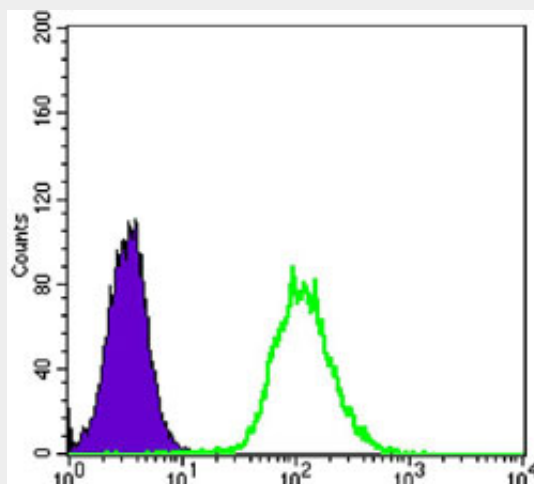


Figure 2: Flow cytometric analysis of Hela cells using anti-CK7 mAb (green) and negative control (purple).

#### **CK7 Antibody - References**

1. Cytogenet Cell Genet. 1991;57(1):33-8.
2. J Pathol. 1998 Mar;184(3):234-9.
3. J Cell Biol. 2006 Jul 17;174(2):169-74.